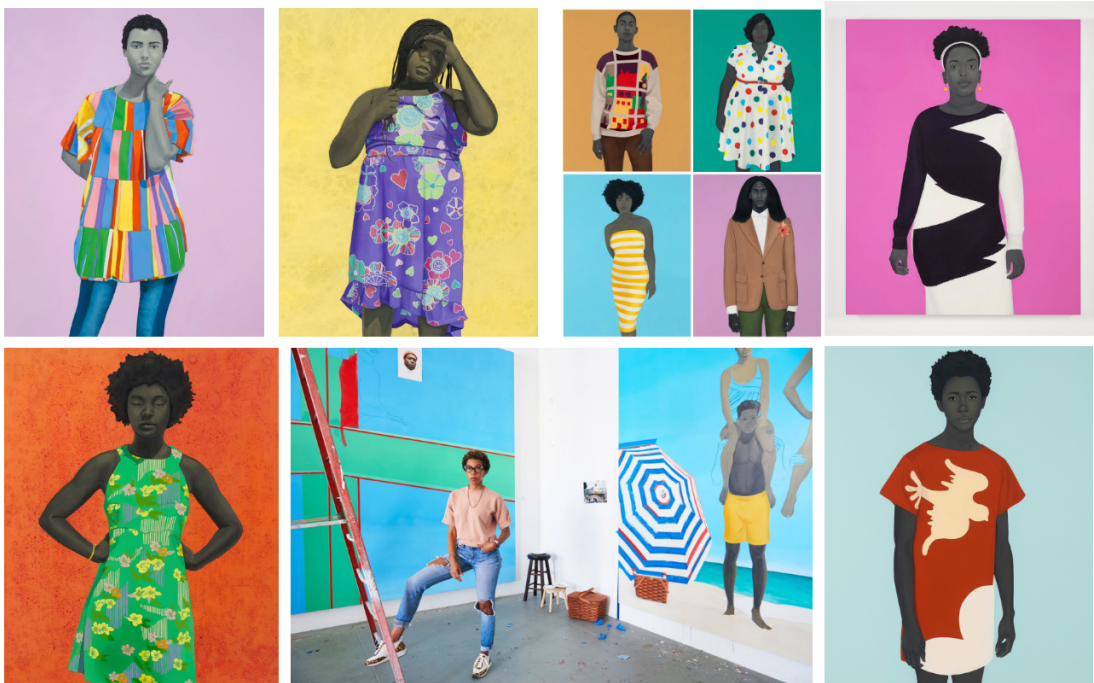


# WIDE RAINBOW LESSONS: Artist Amy Sherald

## ARTIST INTRO:

Amy Sherald (b. 1973) is an American artist that was born in Georgia who now lives and works in New York. She is a painter known for her intimate portraits celebrating African Americans in everyday life. Sherald uses a 'grisaille' technique or shades of grey in her paintings to portray skin tones that challenge conventions about skin color, representation, and race. She received her MFA in painting from Maryland Institute College of Art and BA in painting from Clark-Atlanta University. Among many notable awards, Sherald was the first woman and first African American to ever receive the grand prize from the National Portrait Gallery in Washington D.C. In 2018, she was selected by First Lady Michelle Obama to paint her portrait as an official commission. Her paintings are internationally recognized and housed in countless American museums, cultural institutions, and private collections.

## ARTWORK:





**Amy Sherald**  
**Michelle LaVaughn Robinson Obama, 2018**  
**75 13/16 × 63 13/16 inches**  
**Oil on linen**

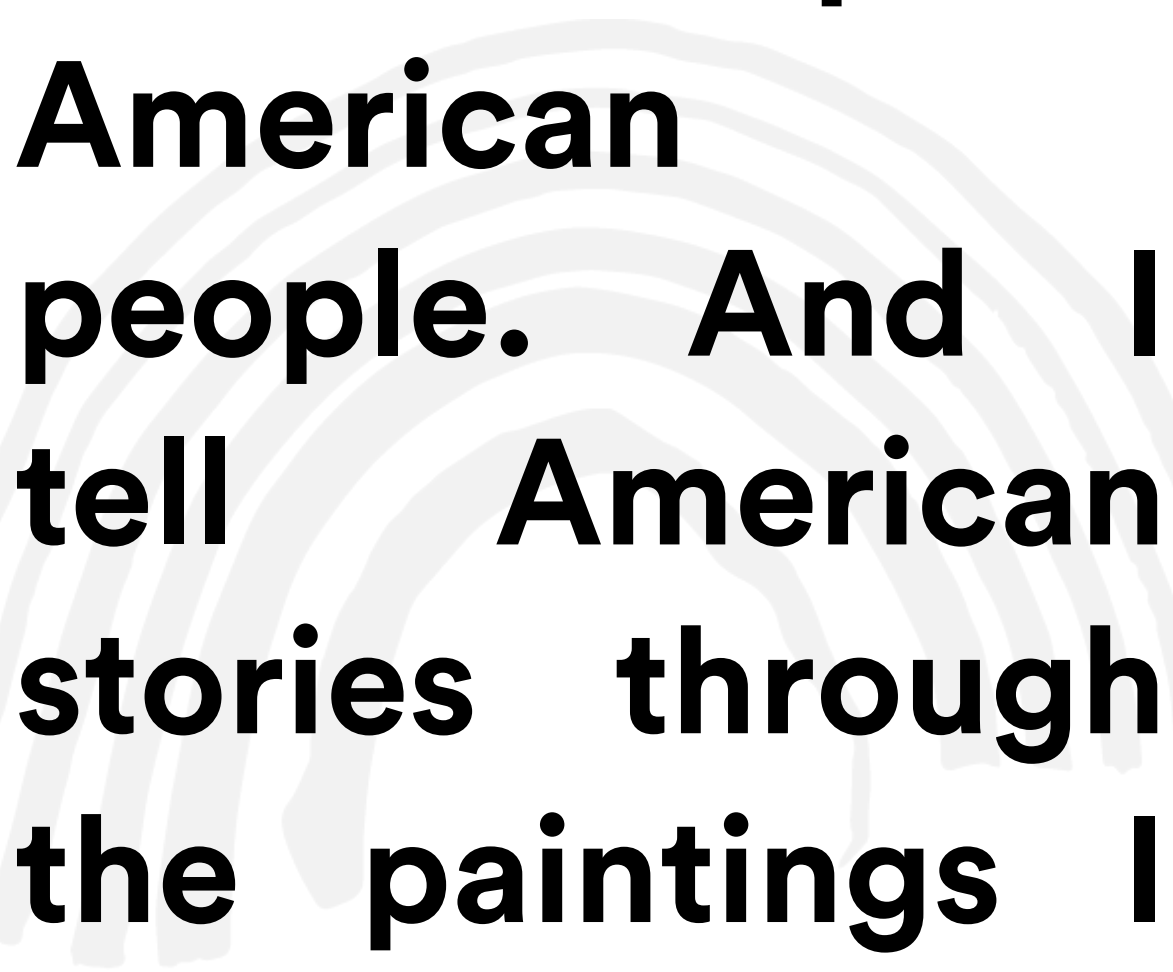
## WORKSHOP:

*Let's make portraits using 'shades of grey' inspired by people in our everyday lives and artist Amy Sherald's paintings!*

1. Think of someone you'd like to make a portrait of from your *everyday* life  
Example: friend, family, educator, neighbor
2. Start by drawing that person on a piece of paper with pencil
3. Consider what makes them unique and include that in your drawing  
Example: favorite hat, sunglasses, teddy bear or object(s) they love
4. Next with your paints and brushes - begin to mix the colors black and white to make your *shades of grey*  
\*You can add little bits of color to make other grey tones
5. Once colors are mixed, start with grey as a base for your portrait
6. Get creative with other colors for the background, clothes, patterns, and any other details that make your portrait unique
7. Let your painting dry, share, and celebrate the person in your portrait!

## MATERIALS:

- Pencil
- Paint
- Brushes
- Paper and/or Canvas



**“I paint  
American  
people. And I  
tell American  
stories through  
the paintings I  
create.”**

**- Amy Sherald**



**FOLLOW UP:**

Who did you choose for your *everyday* portrait? And why?

What special objects, patterns, or colors make them unique?

Why do you think artist Amy Sberald paints with *shades of grey*?

What does the grey mean to you? How did you use grey in your painting?

How did you use color in your portrait?

How can color be used in painting? In art?

**Wide Rainbow is a 501c3 contemporary art after school program.**

**Providing access to art, artists, and arts education.**

**[www.widerainbow.org](http://www.widerainbow.org)**